



Situation Updates on flood affecting Madhesh Province

During 26 to 28-Sep-2024, Madhesh Province faced an unexpected torrential rainfall leading to huge loss in property, agriculture and human health.

Parsa, Rautahat, Sarlahi and Saptari are among the most affected districts with large number of households being displaced.

A total of **2311** households and **5983** individuals have been displaced due to the consequences of flood following the rain. **4** human casualties, **12** injuries and **2** missing cases have been reported. Displaced population in various palikas are vulnerable to post flood consequences and require multisectoral intervention for risk mitigation.

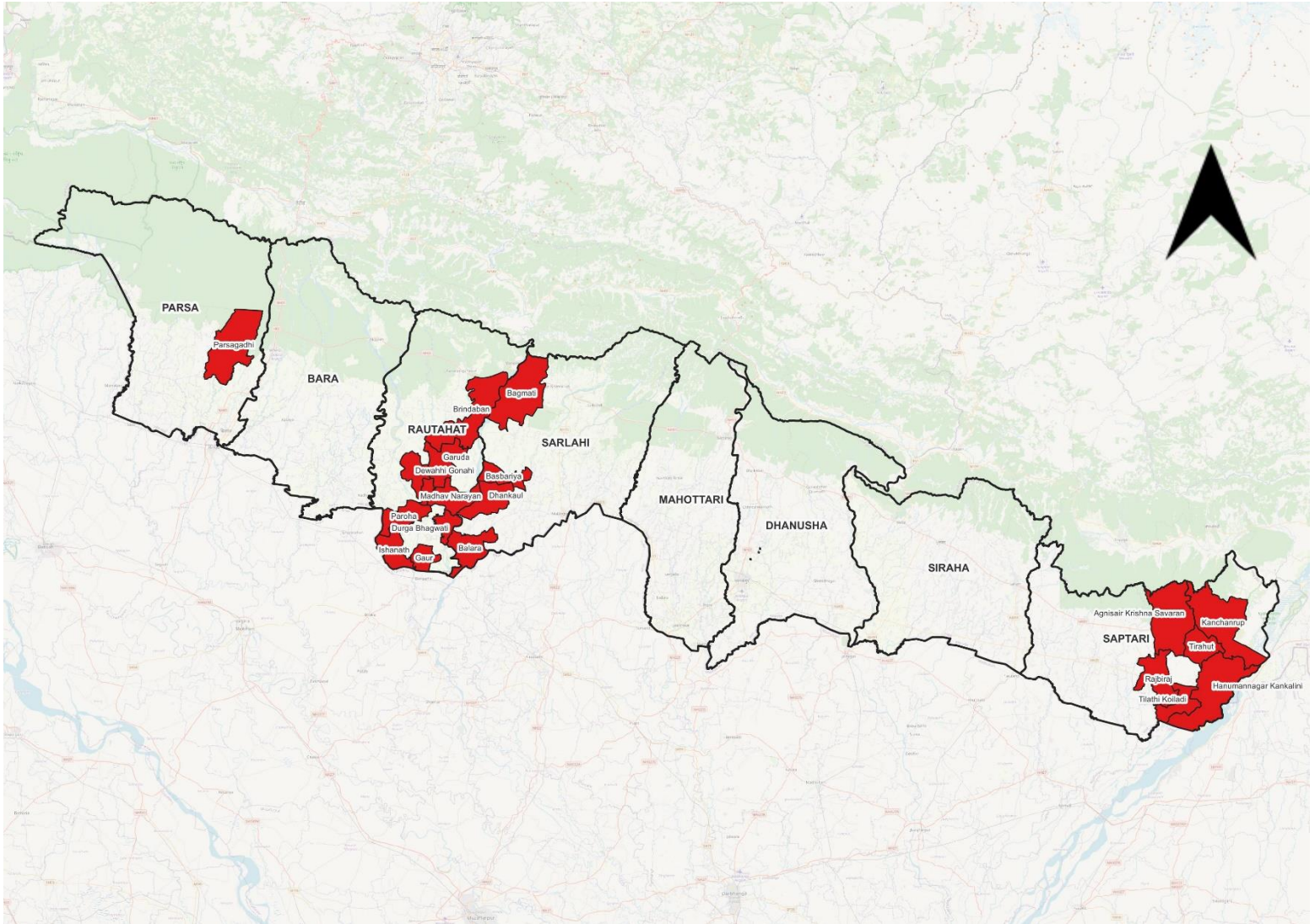


Figure 1: Affected district and local levels of Madhesh Province

Table 1: Details of affected district and palikas.

District	Palika	Displaced Household	Displaced population	Death	Injured	Missing	Remarks
Parsa	Parsagadhi Municipality	N/A	120	-	-	-	
Bara	None	0	0	0	0	0	
Siraha	None	0	0	0	0	0	
Rautahat	Durgabhagwati	1810	5595	2	6	0	
	MadhavNarayan						
	Paroha						
	Gaur						
	Brindaban						
	Garuda						
	DewahiGonahi						
	Ishnath	N/A	N/A	N/A	N/A	N/A	Few Household damaged, transportation affected
Sarlahi	Balara	0	0	1	0	1	200 displaced,
	Basbariya	35	200	0	0	0	
	Bagmati	0	0	0	0	1	
		Dhankaul	N/A	N/A	N/A	N/A	N/A
Dhanusha		0	0	0	0	0	
Mahottari		N/A	N/A	N/A	N/A	N/A	
Siraha		0	0	0	0	0	
Saptari	Kanchanrup	50	N/A	N/A	N/A	N/A	466 Household displaced
	Agnisairkrishnaswaran	4	-	0	0	0	
	Tirahut	8	38	0	0	0	
	Rajbiraj	0	0	1	0	0	
	Hanumanagar Kankalini	395	-	0	0	0	
	Tilathikoiladi	9	30	0	0	0	

A large number of health facilities have been affected causing hinderances in routine health service delivery.

Table 2: Details of affected health facilities

Province	District	Name of Service Delivery Unit	Disaster Type	Remarks
Madhesh	Parsa	Bishrampur Healthpost	Flood	Flooded with water.
Madhesh	Rautahat	Ganga Pipra PHC (Durgabhagwati)	Flood	Autoclave, delivery bed, peri light, Table, chair, sofa damaged due to flood.
Madhesh	Rautahat	Badharwa Health Post & Badaharwaa pari Sarhari (Durgabhagwati)	Flood	Flooded with water. Sofa and Table damaged.
Madhesh	Rautahat	Madhopur Health Post (Madhavnarayan)	Flood	Flooded with water.
Madhesh	Rautahat	Gadho HP (Madhavnarayan)	Flood	Flooded with water.
Madhesh	Rautahat	Laukaha BHSC (Madhavnarayan)	Flood	Flooded with water.
Madhesh	Rautahat	Manpur BHSC (Madhavnarayan)	Flood	Flooded with water.
Madhesh	Rautahat	Keshariya HP (Madhavnarayan)	Flood	Flooded with water.
Madhesh	Rautahat	Laukaha HP (Paroha Mun)	Flood	Flooded with water.
Madhesh	Rautahat	Jingadhawa HP (Paroha Mun)	Flood	Flooded with water.
Madhesh	Rautahat	Jingadhawa BHSC (Paroha Mun)	Flood	Flooded with water.
Madhesh	Rautahat	Tejapakad HP (Paroha Mun)	Flood	Flooded with water.
Madhesh	Rautahat	Rampur Khap (Paroha Mun)	Flood	Flooded with water.
Madhesh	Rautahat	Basbitti BHSC (paroha Mun)	Flood	Flooded with water.
Madhesh	Rautahat	MCH clinic & mahadevpatti HP (Gaur)	Flood	Flooded with water.
Madhesh	Rautahat	Gedahiguthi HP (Gaurda)	Flood	Flooded with water.
Madhesh	Rautahat	Karauniya HP Ward 1, 2 (Dewahigonahi)	Flood	Flooded with water.
Madhesh	Rautahat	Tikuliya Hp (Dewahigonahi)	Flood	Flooded with water.
Madhesh	Rautahat	Dharhari HP (Dewahigonahi)	Flood	Flooded with water.
Madhesh	Rautahat	Karkach HP (Dewahigonahi)	Flood	Flooded with water.
Madhesh	Rautahat	Dewahi HP (Dewahigonahi)	Flood	Flooded with water.
Madhesh	Sarlahi	Balara ward 1 HP (Balara)	Flood	Flooded with water.
Madhesh	Sarlahi	Brahampuri ward 4 HP (Brahampuri)	Flood	Flooded with water.
Madhesh	Sarlahi	Basbariya ward 2 HP (Basbariya)	Flood	Flooded with water.
Madhesh	Sarlahi	Chakraghatta ward 2 HP (Chakraghatta)	Flood	Flooded with water.
Madhesh	Saptari	Health section of Hanumannagar Kankalini	Flood	Flooded with water.

Interventions:	Way Forward:
<ul style="list-style-type: none"> ● Health worker mobilization in affected palikas. 	<ul style="list-style-type: none"> ● Preparedness and alert for post flood consequences.
<ul style="list-style-type: none"> ● RRT teams are on standby for possible outbreaks. 	<ul style="list-style-type: none"> ● Continue WASH interventions.
<ul style="list-style-type: none"> ● Relief materials distribution on going. 	<ul style="list-style-type: none"> ● Early recovery and rehabilitation.
	<ul style="list-style-type: none"> ● Health education in affected localities to minimize potential outbreaks.
	<ul style="list-style-type: none"> ● Continuation of data collection for further updates and disaggregation of affected population.

This situation report is prepared with official information's provided by Provincial Emergency operation center, health offices, local levels and other concerned stakeholders and will be regularly updated as new data and information are received.